

# ***STRADA***

---

## **GL / Cab & Chassis**



**MITSUBISHI  
MOTORS**

Drive your Ambition





## Robust Performance

(4N15) 2.4L 4 In-Line 16-Valve DOHC  
with Variable Geometry Turbo (VGT) (GL)



# STRADA GL

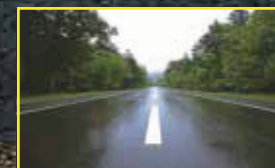
The Mitsubishi Strada GL takes the power and reliability of a traditional pickup and adds to it the comfort of a sedan for a newly unveiled sense of adventure. Bring more of your world wherever you go thanks to its spacious cabin and cargo bed.

Dynamic Style



### 2H (2WD High Range)

When you're just cruising down the highway or just going across town, 2H mode shifts you into rear-wheel drive for fuel-efficient performance.



### 4H (4WD High Range)

When the weather turns bad and the roads get rough, switch to 4H mode for added traction. The front/rear torque split adjusts to 40:60 to give you greater control for high-speed driving.



### 4LLc (4WD Low Range with Locked Center Differential)

Switch to 4LLc when you need all the power to slog through the roughest terrain... even the stickiest mud.



Electronic Dial Selector (GL 4WD)







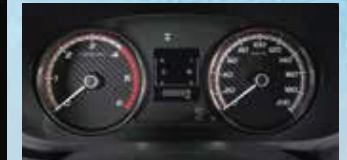
Aesthetically pleasing and ergonomic black and gray dashboard



Spacious Legroom



2 DIN Single In-dash CD/MP3/WMA/Tuner/iPod-ready/Audio Jack



High Contrast Multi-information Instrument Meter Display



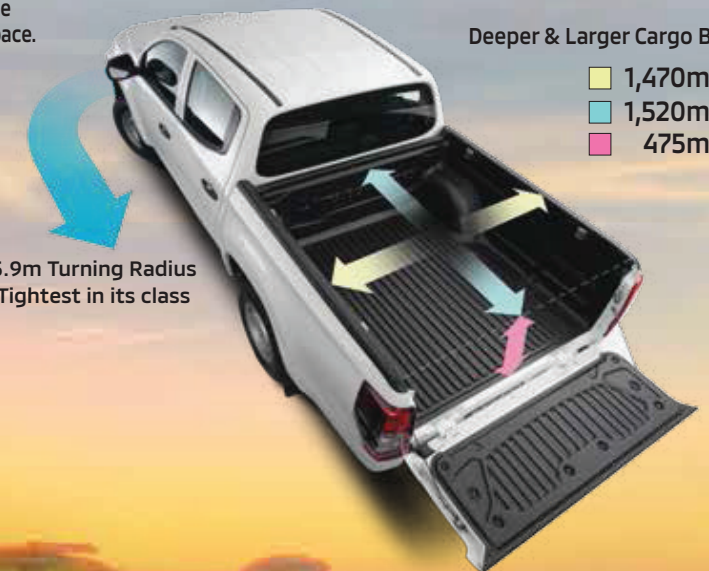
The J-line design is a clever engineering design made to shorten the wheelbase and maximize interior space.



High Mount Stop Lamp



Fog Lamps (GL 4WD)



Deeper & Larger Cargo Bed

- 1,470mm
- 1,520mm
- 475mm

5.9m Turning Radius  
Tightest in its class



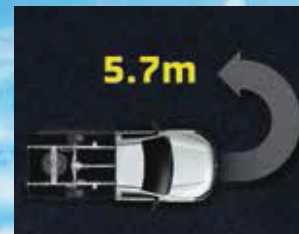
# STRADA Cab & Chassis



For the many needs and goals of start-up and medium-scale entrepreneurs, you can always count on the Strada Cab & Chassis to get the job done. Built strong for any kind of cargo, for any kind of business.



2 DIN Single In-dash CD/MP3/  
WMA/ Tuner/iPod-ready/Audio Jack

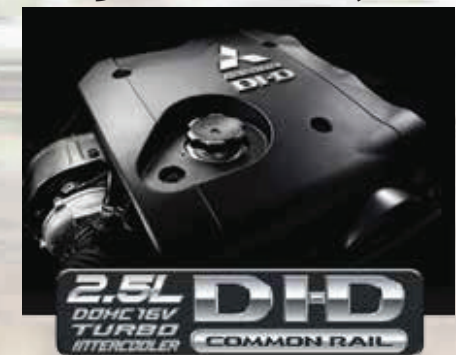


Tight Minimum  
Turning Radius



**Powerful yet economical 4D56 2.5L 4 In-line  
16-Valve with Turbocharged Intercooler System**

The 2.5-liter Direct Injection Common Rail diesel engine is designed to cope with the demands of high speed motoring. Aside from being able to produce ample power and torque, this breakthrough engine assures better fuel efficiency and reduced emissions.



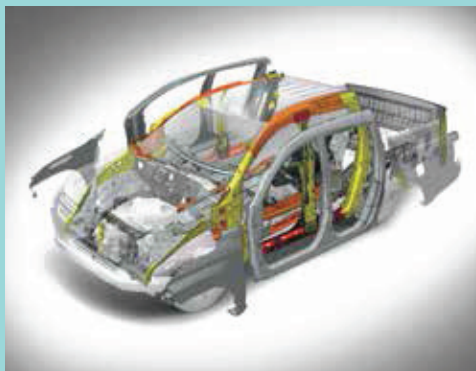
## Performance and Functionality

[Optional rear bodies are for visual appreciation only.]





## Standard Strada Safety Features:



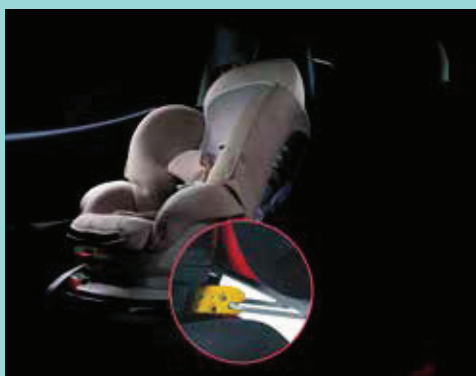
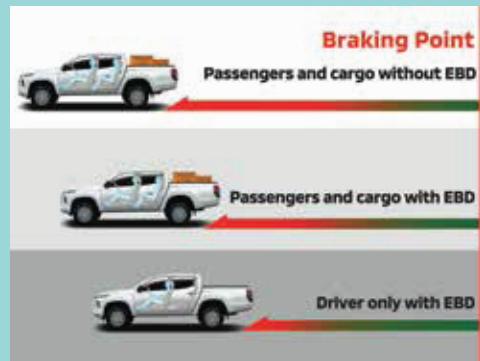
RISE Body



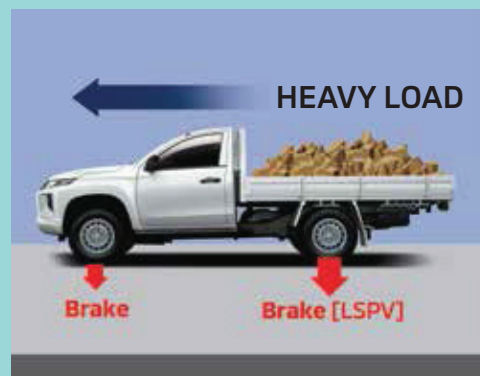
Dual SRS Airbags



Anti-Lock Braking System [ABS] - Equipped with Electronic Brakeforce Distribution [EBD] (GL)



ISO Fix and Tether Anchor (GL)



Load Sensing Proportioning Valve [LSPV]  
(Cab & Chassis)

GENERAL SPECIFICATIONS		GL 4WD	GL 2WD	Cab & Chassis
Overall Length	mm	5,200		4,865
Overall Width	mm	1,785		
Overall Height	mm	1,775		1,655
Wheelbase	mm	3,000		
Tread (Front/Rear)	mm	1,520 / 1,515		
Min. Ground Clearance	mm	200		
Gross Vehicle Weight	kg	2,850	2,760	2,570
Curb Weight	kg	1,805	1,705	1,355
Seating Capacity	persons	5		3
Min. Turning Radius	m	5.9		5.7
ENGINE				
Model/Type		(4N15) 2.4L 4 In-line 16-Valve DOHC with Variable Geometry Turbo (VGT)		(4D56) 2.5L 4 In-line 16-Valve DOHC with Turbocharged Intercooler System
Starter Interlock		Equipped		
Fuel System		Electronic Common Rail Direct Injection		
Max. Power	Ps	167		128
Fuel Tank Capacity	L	75		
TRANSMISSION				
Limited Slip Differential		Equipped (Hybrid-Type)		Not Equipped
Clutch		Single, Dry Plate with Diaphragm Spring		
Drivetrain		Easy Select	Rear Wheel Drive	
Type		6-Speed Manual		5-Speed Manual
SUSPENSION				
Front		Independent Double Wishbone with Coil Spring and Stabilizers		Independent Double Wishbone with Coil Spring (Heavy Duty-Type)
Rear		Rigid Elliptic Leaf Springs with Telescopic Shock Absorber		Rigid Elliptic Leaf Springs with Telescopic Shock Absorber (Heavy Duty-Type)
BRAKES				
Front		16" Ventilated Disc		15" Ventilated Disc
Rear		11.6" Leading and Trailing Drums		10" Leading and Trailing Drums
TIRES AND WHEELS				
Tires		205 R16C 110/108R		195 R15C 8PR 106/104R
Wheels		16" x 6.0JJ Steel		15" x 6.0JJ Steel
Spare Tire		16" x 6.0JJ Steel		15" x 6.0JJ Steel
STEERING				
Gear Type		Rack and Pinion		
Power Steering		Equipped		
Steering Wheel		3-Spoke Urethane		
Tilt Adjust Steering Column		Equipped		
AUDIO SYSTEM				
Speakers		2		
Antenna		Pillar-Mounted		
SAFETY				
Anti-Lock Braking System (ABS)		Equipped with Electronic Brakeforce Distribution (EBD)		Not Equipped
Load Sensing Proportioning Valve (LSPV)		Not Equipped		Equipped
Seatbelts	Front	3 pt. ELR with Pretensioner, Force Limiter Function and Adjustable Anchor x 2		3 pt. ELR with Pretensioner, Force Limiter Function and 2 pt. Lapbelt
	Rear	3 pt. ELR x 3		Not Applicable
Child Protection Lock		Equipped		Not Applicable
ISO-Fix		Equipped		Not Applicable
Tether Anchor		Equipped		Not Equipped
Sidedoor Impact Beam		Equipped		
MISCELLANEOUS				
Bedliner for Cargo Bed		Equipped (Over Rail-Type)		Not Applicable